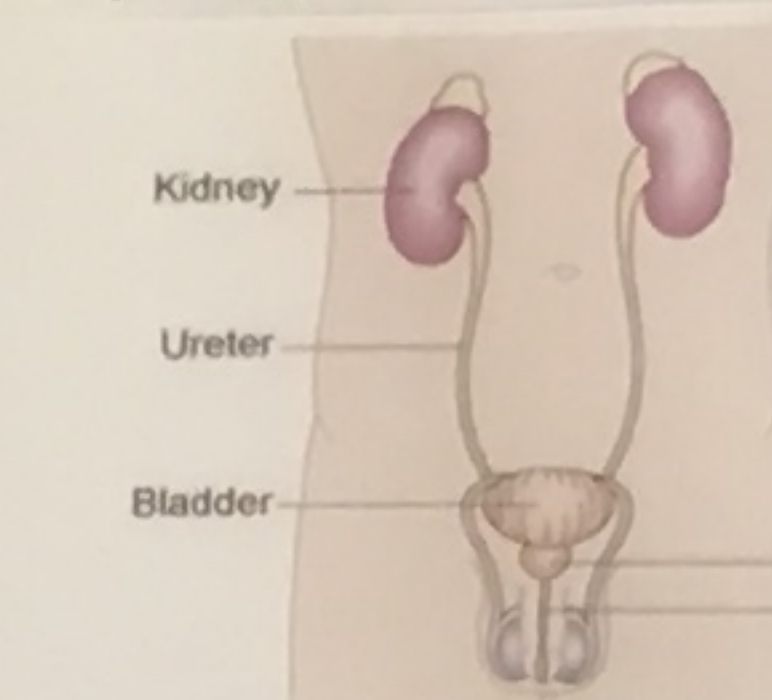


Tadashi Yamamoto, Chair; HKUPP
Biofluid Biomarker Center (BB-C), Institute of Research Collaboration and Promotion,
Niigata University, Niigata, Japan

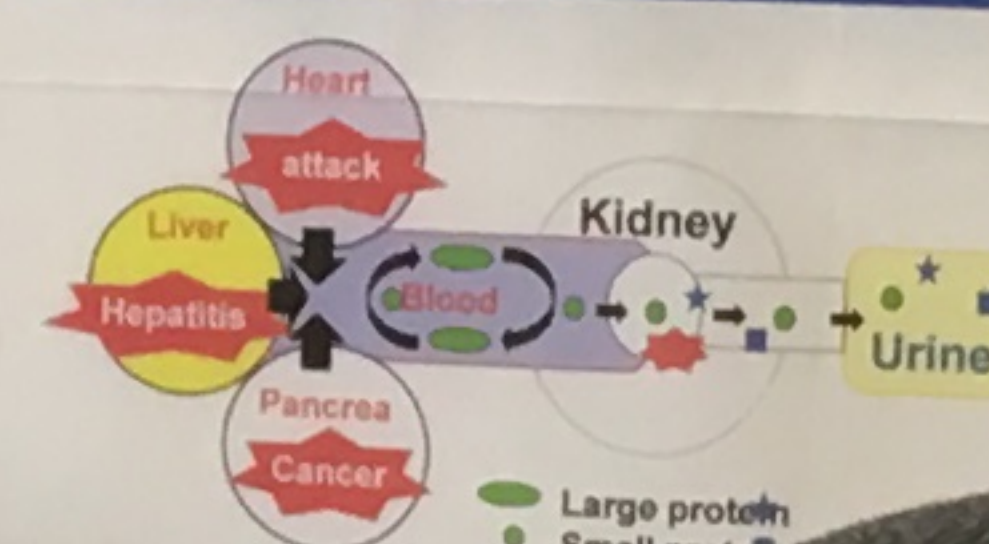
Tadashi Yamamoto, Chair; HKUPP
Biofluid Biomarker Center (BB-C), Institute of Research Collaboration and Promotion,
Niigata University, Niigata, Japan

HKUPP was established in 2006 to understand kidney and other urinary tract diseases and to identify urine biomarkers for the diseases through international collaboration by mass spectrometry (MS)-based and antibody-based (Ab) proteomics (Human Protein Atlas; <http://www.proteinatlas.org>).



In the HKUPP website (<http://www.hkupp.org>), MS-based proteome datasets of human kidney parts (cortex, medulla, glomerulus, proximal tubule, distal tubule, collecting duct), ureter and also urine have been analyzed. Cross-matching of the human kidney proteomes obtained by the MS- and Ab-based proteomics has been examined.

Cross-Analysis of Liver, Plasma, Kidney and Urine Proteomes



MS)-based pro
Liver
Plasma
Kidney
Urine
Kidney
(see
154 -

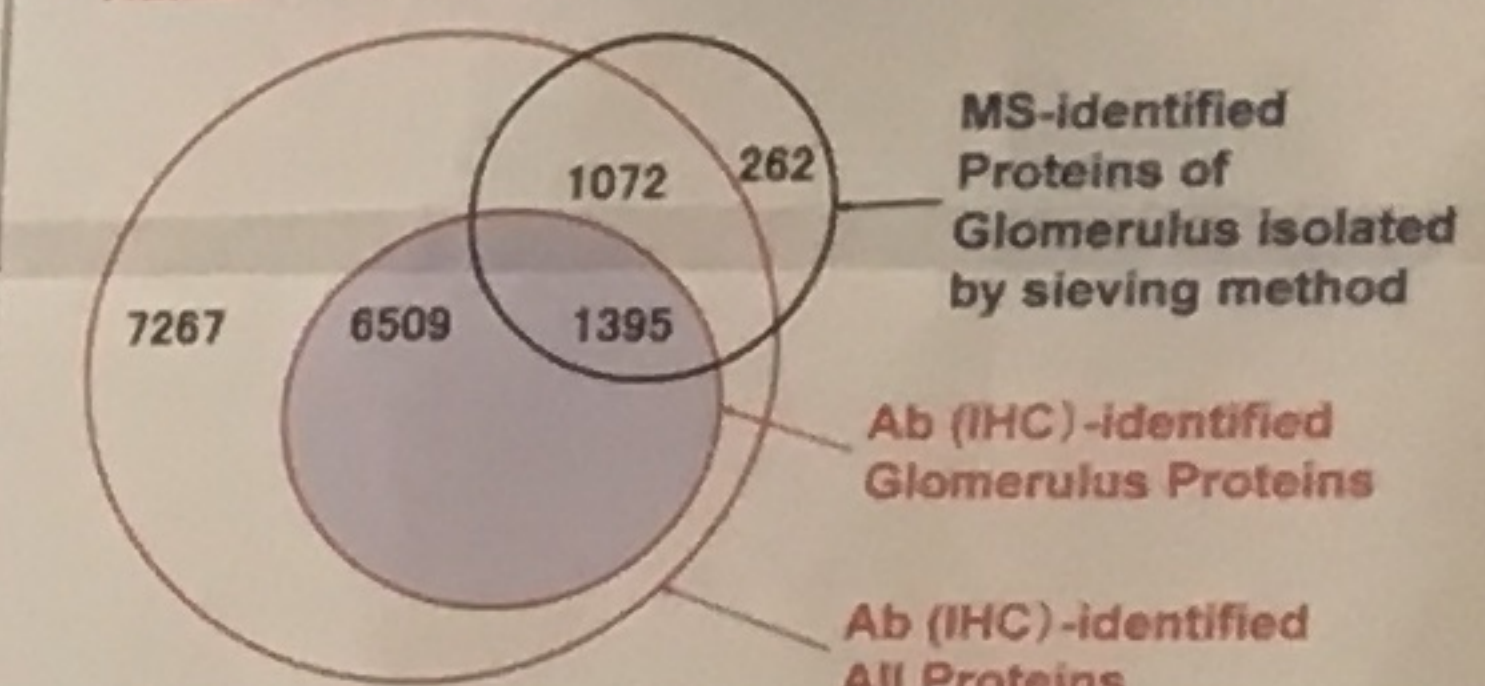
Urine Proteomes by MS- and Ab-based Proteomics

Urine Proteins identified by MS and by Human

Protein Name	Accession	Peptides	Origin
Albumin	P02768	737	Plasma
			Basement membrane
			Plasma
			tubule
			tubule
			na
			rator
			tubule
			isma
			al tubule
			proximal tubule ?
			Proximal tubule
			Interstitial
Lactalbumin	P02769	1	Plasma

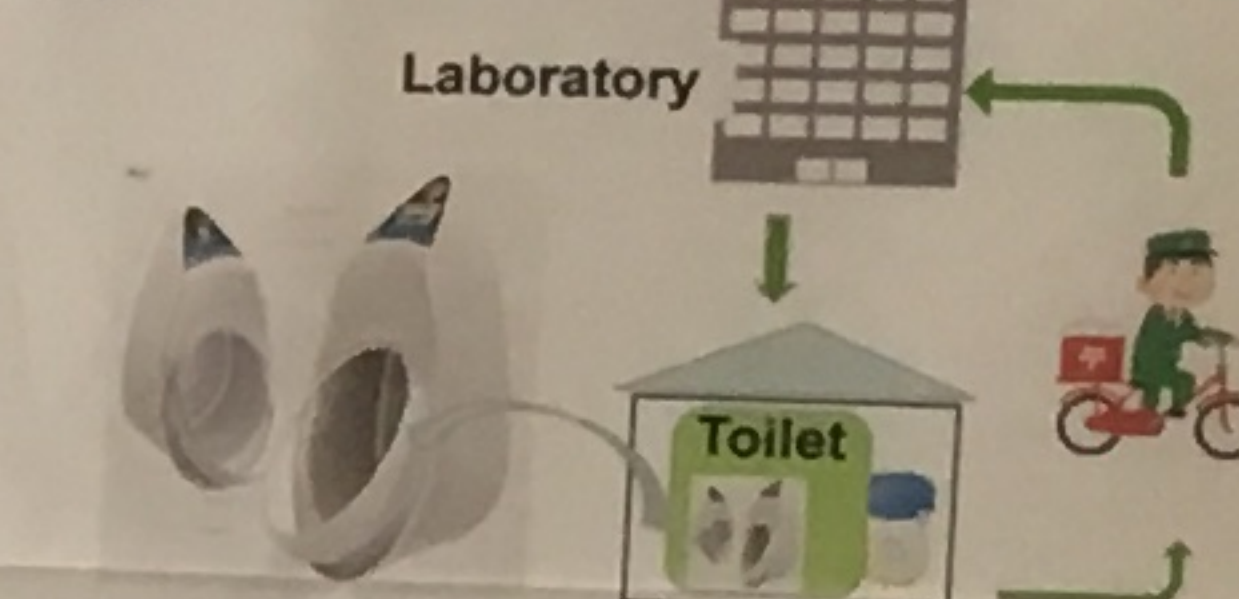
Number of Glomerulus Proteins identified by MS and Ab(IHC)-based Proteomics

Human Protein Atlas

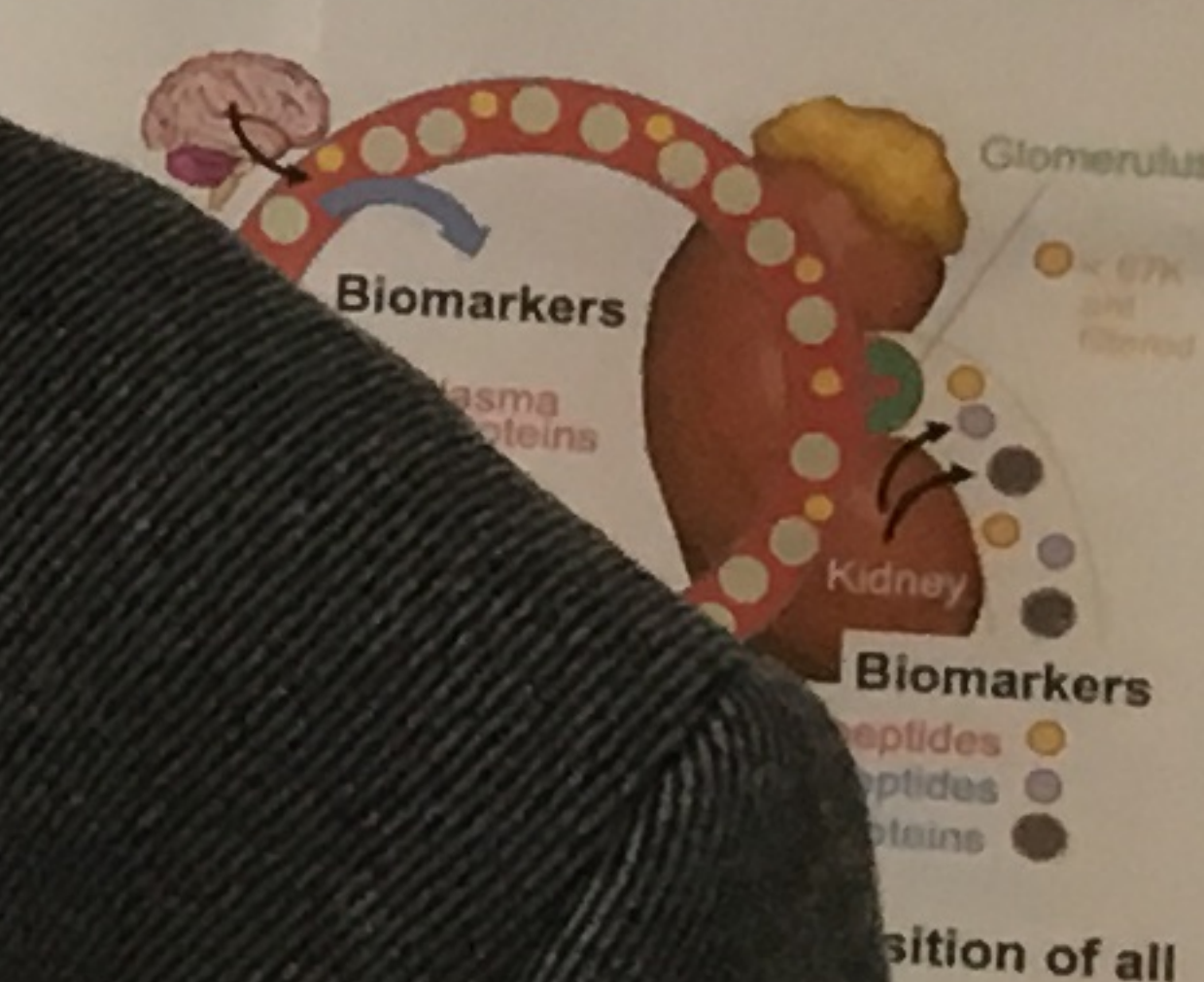


Urine Test for Health Check and All Diseases

Current Health Check	Future Health Check
<ul style="list-style-type: none"> ● Blood examination ● Urine exam ● X-ray, CT, MRI, Ultrasonic ● ECG 	<ul style="list-style-type: none"> ● Urine exam at Lab → at Home



Plasma/Urine Proteins and Peptides



余暇を因

体液バイオマ
革新的イノベ



若干名なので簡単な自己
下記まで早めにエントリー
(締め切り 2016 年 4 月)

BB©